

Parker Pneumatic

Vacuum Cups PCG Multiple Bellows Vacuum Cups

2-1/2 bellows design minimizes contact pressure applied to the product. The soft seal lip and touch allows the cup to conform to the product's surface to make a vacuum seal.

These multiple bellow cups are designed for applications that require additional level compensation, more flexibility, or minimum back pressure for a "soft touch". The multiple bellow has a soft sealing edge good for a variety of sensitive applications; such as food packaging, CD / DVD, medical packaging, and highly irregular curved surfaces. Cups can also be used to assist with sheet separation in destack operations.



Features

- Soft touch
- Extra level compensation
- Flexible sealing lip for irregular curved surfaces
- 5mm to 90mm in diameter

Styles

- PCTM series male thread connector
- PCTF series female thread Connector
- PCTK series barbed bulkhead

Specifications

Cup material	Nitrile	Nitrile ESD*	Silicon	Silicon ESD*	Urethane
Material code	NBR	NBRE	SI	SIE	U
Operating temperature (°C)	-20° to +120°	0° to +60°	-60° to +250°	-10° to +130°	-20° to +75°
Color	Black	Black / Blue Dot	White	Black / Red Dot	Blue
Hardness, shore A (°Sh)	55 ±5	70 ±5	55 ±5	55 ±5	55 ±5
Electrical resistance (Ωm)	—	800 to 1000	—	5 to 15	—

* ESD: Electric Static Dissipative Material

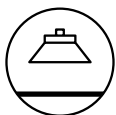
How to order

Cups assemblies and replacement cups are specified by cup diameter and material. Standard nitrile and silicon are listed on the following pages. To specify an alternative material, replace the cup material with alternative cup material code.

Example: To specify a cup assembly with urethane (U), replace (NBR) with (U) in the part number. PCTM-20B-NBR-G1 becomes PCTM-20B-U-G1. Inquire with factory for availability.

Application guide

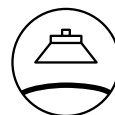
2-1/2 Bellows



Flat surface, any section



Bowed surface, thin section



Slightly bowed surface, any section



Bowed surface, any section



Soft material



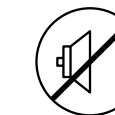
Metal sheet handling



Corrugated sheet handling



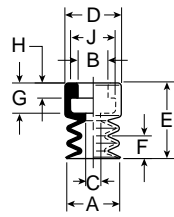
Differences in heights and levels



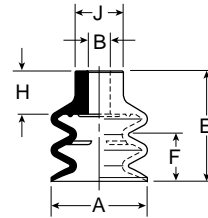
Not for vertical lift

PCG Series Replacement Cup Dimensions

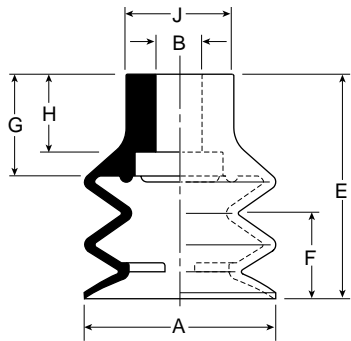
**PCG-5 and
 PCG-7**



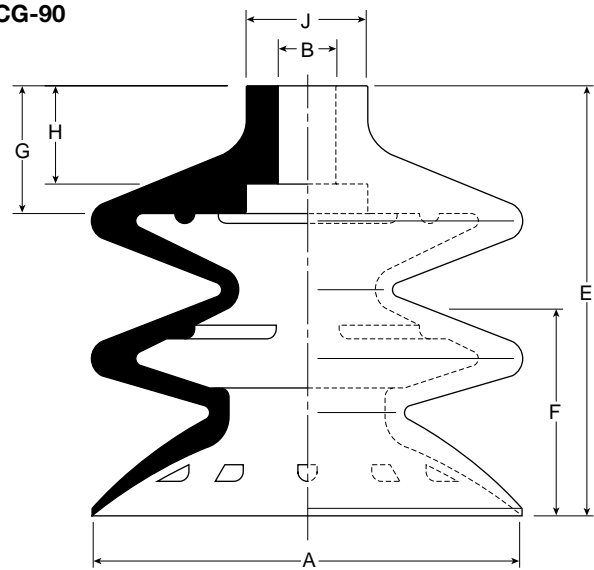
**PCG-10 thru
 PCG-20**



**PCG-30 thru
 PCG-60**



PCG-90



Model number	ØA	ØB	ØC	ØD	E	F	G	H	J
PCG-5-*	.20 (5)	.16 (4)	.08 (2)	.30 (7.5)	.37 (9.5)	.12 (3)	.16 (4)	.08 (2)	.24 (6)
PCG-7-*	.28 (7)	.16 (4)	.08 (2)	.30 (7.5)	.39 (10)	.12 (3)	.16 (4)	.08 (2)	.24 (6)
PCG-10-*	.35 (9)	.20 (5)	—	—	.59 (15)	.12 (3)	.28 (7)	—	.35 (9)
PCG-15-*	.60 (15.2)	.20 (5)	—	—	.90 (22)	.39 (10)	.35 (9)	—	.39 (10)
PCG-20-*	.79 (20)	.20 (5)	—	—	.91 (23)	.39 (10)	.35 (9)	—	.39 (10)
PCG-30-*	1.26 (32)	.31 (8)	—	—	1.48 (37.5)	.57 (14.5)	.67 (17)	.51 (13)	.71 (18)
PCG-40-*	1.65 (42)	.31 (8)	—	—	1.81 (46)	.87 (22)	.67 (17)	.51 (13)	.79 (20)
PCG-60-*	2.44 (62)	.31 (8)	—	—	2.17 (55)	1.06 (27)	.71 (18)	.51 (13)	.85 (21.5)
PCG-90-*	3.46 (88)	.47 (12)	—	—	3.44 (87.5)	1.65 (42)	1.02 (26)	.79 (20)	.98 (25)

Inches (mm)
 * Cup material