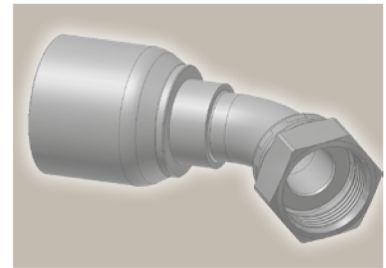
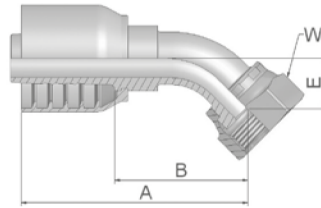


J7 Femelle tournant ORFS coude 45°

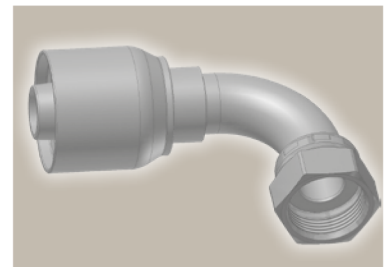
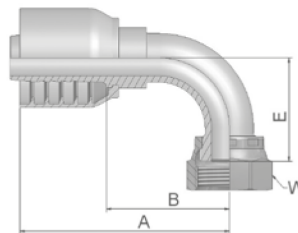
ISO 12151-1 – SWE 45°
SAE J516 – ORFS 45°



| Référence | D. Int. du tuyau | | | | Filetage UNF | A mm | B mm | E mm | W mm |
|----------------|------------------|-------|--------|------|-----------------|---------|---------|---------|---------|
| | DN | pouce | module | mm | | | | | |
| 1J773-12-12-SM | 19 | 3/4 | -12 | 19.1 | 1 3/16x12 | 105 | 57 | 21 | 36 |
| 1J773-16-12-SM | 19 | 3/4 | -12 | 19.1 | 1 7/16x12 | 107 | 59 | 24 | 41 |
| 1J773-16-16-SM | 25 | 1 | -16 | 25.4 | 1 7/16x12 | 119 | 69 | 24 | 41 |
| 1J773-20-16-SM | 25 | 1 | -16 | 25.4 | 1 11/16x12 | 131 | 80 | 26 | 50 |
| 1J773-20-20 | 31 | 1 1/4 | -20 | 31.8 | 1 11/16x12 | 147 | 83 | 25 | 7/8 |
| 1J773-20-20-SM | 31 | 1 1/4 | -20 | 31.8 | 1 11/16x12 | 154 | 90 | 30 | 50 |
| 1J773-24-20-SM | 31 | 1 1/4 | -20 | 31.8 | 2x12 | 164 | 100 | 40 | 60 |

J9 Femelle tournant ORFS coude 90°

ISO 12151-1 – SWES
SAE J516 – ORFS 90°



| Référence | D. Int. du tuyau | | | | Filetage UNF | A mm | B mm | E mm | W mm |
|----------------|------------------|-------|--------|------|-----------------|---------|---------|---------|---------|
| | DN | pouce | module | mm | | | | | |
| 1J973-12-12-SM | 19 | 3/4 | -12 | 19.1 | 1 3/16x12 | 101 | 53 | 48 | 36 |
| 1J973-16-12-SM | 19 | 3/4 | -12 | 19.1 | 1 7/16x12 | 113 | 65 | 56 | 41 |
| 1J973-16-16-SM | 25 | 1 | -16 | 25.4 | 1 7/16x12 | 120 | 70 | 56 | 41 |
| 1J973-20-16-SM | 25 | 1 | -16 | 25.4 | 1 11/16x12 | 127 | 77 | 64 | 50 |
| 1J973-20-20 | 31 | 1 1/4 | -20 | 31.8 | 1-11/16x12 | 148 | 84 | 64 | 7/8 |
| 1J973-20-20-SM | 31 | 1 1/4 | -20 | 31.8 | 1 11/16x12 | 151 | 87 | 69 | 50 |
| 1J973-24-24-SM | 38 | 1 1/2 | -24 | 38.1 | 2x12 | 166 | 103 | 82 | 60 |

Série d'embouts compatible avec les tuyaux:

73 731 731TC SX35 SX42