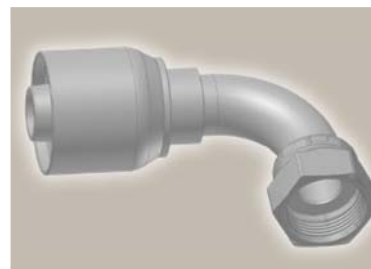
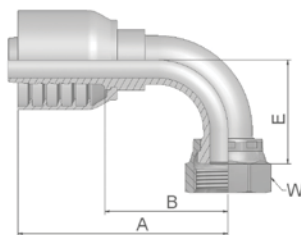


J9 Femelle tournant ORFS coude 90°

ISO 12151-1 – SWES
SAE J516 – ORFS 90°



Référence	D. Int. du tuyau				Filetage UNF	A mm	B mm	E mm	W mm
	DN	pouce	module	mm					
1J973-12-12-SM	19	3/4	-12	19.1	1 3/16x12	101	53	48	36
1J973-16-12-SM	19	3/4	-12	19.1	1 7/16x12	113	65	56	41
1J973-16-16-SM	25	1	-16	25.4	1 7/16x12	120	70	56	41
1J973-20-16-SM	25	1	-16	25.4	1 11/16x12	127	77	64	50
1J973-20-20	31	1 1/4	-20	31.8	1-11/16x12	148	84	64	7/8
1J973-20-20-SM	31	1 1/4	-20	31.8	1 11/16x12	151	87	69	50
1J973-24-24-SM	38	1 1/2	-24	38.1	2x12	166	103	82	60

Série d'embouts compatible avec les tuyaux:

73 731 731TC SX35 SX42