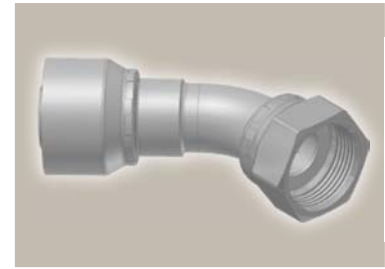
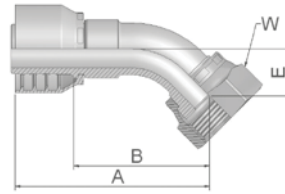


# J7 Femelle tournant ORFS coude 45°

ISO 12151-1 – SWE 45°  
SAE J516 – ORFS 45°



Référence		D. Int. du tuyau				Filetage	A	B	E	W
Série 46	Série 48	DN	pouce	module	mm	UNF	mm	mm	mm	mm
1J746-4-4	1J748-4-4	6	1/4	-4	6,4	9/16x18	54	31	10	17
1J746-6-4	1J748-6-4	6	1/4	-4	6,4	11/16x16	53	30	11	22
1J746-8-4	1J748-8-4	6	1/4	-4	6,4	13/16x16	59	34	15	24
1J746-6-5	1J748-6-5	8	5/16	-5	7,9	11/16x16	56	32	11	22
1J746-6-6	1J748-6-6	10	3/8	-6	9,5	11/16x16	54	31	11	22
1J746-8-6	1J748-8-6	10	3/8	-6	9,5	13/16x16	59	36	15	24
1J746-6-8		12	1/2	-8	12,7	11/16x16	57	33	11	22
	1J748-6-8	12	1/2	-8	12,7	11/16	57	33	11	22
1J746-8-8	1J748-8-8	12	1/2	-8	12,7	13/16x16	61	38	15	24
1J746-10-8	1J748-10-8	12	1/2	-8	12,7	1x14	65	41	16	30
1J746-12-8	1J748-12-8	12	1/2	-8	12,7	1 3/16x12	77	53	21	36
1J746-10-10	1J748-10-10	16	5/8	-10	15,9	1x14	67	42	16	30
1J746-12-10	1J748-12-10	16	5/8	-10	15,9	1 3/16x12	80	55	21	36
1J746-10-12	1J748-10-12	19	3/4	-12	19,1	1x14	73	47	16	30
1J746-12-12	1J748-12-12	19	3/4	-12	19,1	1 3/16x12	83	57	21	36
1J746-16-12	1J748-16-12	19	3/4	-12	19,1	1 7/16x12	94	68	24	41
1J746-12-16	1J748-12-16	25	1	-16	25,4	1 3/16x12	91	61	21	36
1J746-16-16	1J748-16-16	25	1	-16	25,4	1 7/16x12	99	69	24	41
1J746-20-16	1J748-20-16	25	1	-16	25,4	1 11/16x12	101	71	25	50
1J746-20-20		31	1 1/4	-20	31,8	1 11/16x12	124	86	26	50
	1J748-20-20	31	1 1/4	-20	31,8	1 11/16x12	130	82	27	50
	1J748-24-24	38	1 1/2	-24	38,1	2x12	148	110	40	60

**Série d'embouts** compatible avec **les tuyaux**, en fonction des modules:

46 or 48	441   441RH   461LT   462   462ST   462TC   462ST   629PU   692PU Twin
46	463   492   492ST   492TC   692   692Twin   692TC   BCH1
48	301SN   301TC   304   387   387ST   387TC   421RH   421SN   426   436   441RH   462PU   462PU Twin   BCH2   HT2   ...
	471TC   477   477ST   477TC   477RH   487   487ST   487TC   493   787   787TC   787ST   797   797TC   797ST   811   881