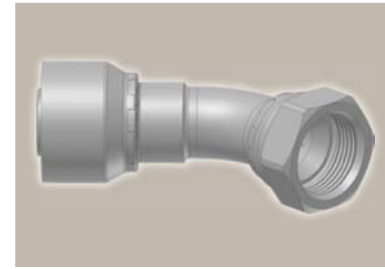
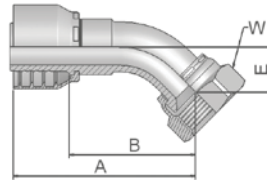


37/3V Femelle tournant JIC 37° / JIC 37° et SAE 45° coude 45°

ISO 12151-5-SWE 45° – DKJ 45°



Référence		D. Int. du tuyau				Filetage	A	B	E	W
Série 46	Série 48	DN	pouce	module	mm	UNF	mm	mm	mm	mm
13V46-4-4	13V48-4-4	6	1/4	-4	6,4	7/16x20	53	29	10	17
13V46-5-4	13V48-5-4	6	1/4	-4	6,4	1/2x20	57	33	9	17
13746-6-4	13748-6-4	6	1/4	-4	6,4	9/16x18	55	31	11	19
13V46-5-5	13V48-5-5	8	5/16	-5	7,9	1/2x20	53	29	10	17
13746-6-5	13748-6-5	8	5/16	-5	7,9	9/16x18	58	35	10	19
13746-6-6	13748-6-6	10	3/8	-6	9,5	9/16x18	60	37	11	19
13V46-8-6	13V48-8-6	10	3/8	-6	9,5	3/4x16	67	44	15	22
13V46-10-6	13V48-10-6	10	3/8	-6	9,5	7/8 14	69	46	17	27
13V46-8-8	13V48-8-8	12	1/2	-8	12,7	3/4x16	61	37	15	22
13V46-10-8	13V48-10-8	12	1/2	-8	12,7	7/8x14	70	46	16	27
13V46-10-10	13V48-10-10	16	5/8	-10	15,9	7/8x14	69	44	16	27
13746-12-10	13748-12-10	16	5/8	-10	15,9	1 1/16x12	74	49	21	32
13746-12-12	13748-12-12	19	3/4	-12	19,1	1 1/16x12	83	58	22	32
13746-14-12	13748-14-12	19	3/4	-12	19,1	1 3/16x12	84	58	22	36
13746-16-12	13748-16-12	19	3/4	-12	19,1	1 5/16x12	84	58	24	41
13746-12-16	13748-12-16	25	1	-16	25,4	1 1/16x12	91	61	21	32
13746-16-16	13748-16-16	25	1	-16	25,4	1 5/16x12	99	70	24	41
13746-20-16	13748-20-16	25	1	-16	25,4	1 5/8x12	101	71	26	50
13746-20-20		31	1 1/4	-20	31,8	1 5/8x12	129	91	31	50
	13748-20-20	31	1 1/4	-20	31,8	1 5/8x12	134	87	30	50
	13748-24-24	38	1 1/2	-24	38,1	1 7/8x12	165	127	58	60

Série d'embouts compatible avec les tuyaux, en fonction des modules:

46 or 48	441 441RH 461LT 462 462ST 462TC 462ST 629PU 692PU Twin
46	463 492 492ST 492TC 692 692Twin 692TC BCH1
48	301SN 301TC 304 387 387ST 387TC 421RH 421SN 426 436 441RH 462PU 462PU Twin BCH2 HT2 ...
	471TC 477 477ST 477TC 477RH 487 487ST 487TC 493 787 787TC 787ST 797 797TC 797ST 811 881