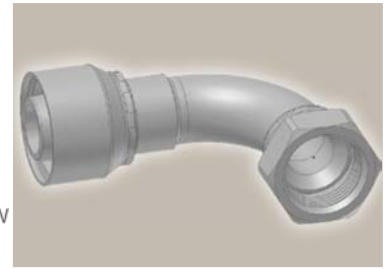
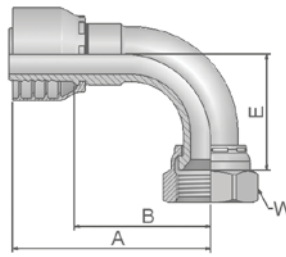


39/3W Femelle tournant JIC 37° / JIC 37° et SAE 45° coude 90°

ISO 12151-5-SWES – DKJ 90°



| Référence | D. Int. du tuyau | | | | Filetage UNF | A mm | B mm | E mm | W mm |
|-------------|------------------|-------|--------|------|-----------------|---------|---------|---------|---------|
| | DN | pouce | module | mm | | | | | |
| 13W16-4-4 | 6 | 1/4 | -4 | 6,4 | 7/16x20 | 46 | 24 | 21 | 17 |
| 13916-6-4 | 6 | 1/4 | -4 | 6,4 | 9/16x18 | 48 | 25 | 23 | 19 |
| 13916-6-6 | 10 | 3/8 | -6 | 9,5 | 9/16x18 | 50 | 28 | 23 | 19 |
| 13W16-8-6 | 10 | 3/8 | -6 | 9,5 | 3/4x16 | 59 | 36 | 29 | 22 |
| 13W16-8-8 | 12 | 1/2 | -8 | 12,7 | 3/4x16 | 55 | 31 | 29 | 22 |
| 13W16-10-8 | 12 | 1/2 | -8 | 12,7 | 7/8x14 | 62 | 39 | 32 | 27 |
| 13W16-10-10 | 16 | 5/8 | -10 | 15,9 | 7/8x14 | 69 | 44 | 33 | 27 |
| 13916-12-10 | 16 | 5/8 | -10 | 15,9 | 1 1/16x12 | 74 | 49 | 48 | 32 |
| 13916-12-12 | 19 | 3/4 | -12 | 19,1 | 1 1/16x12 | 80 | 54 | 48 | 32 |
| 13916-16-12 | 19 | 3/4 | -12 | 19,1 | 1 5/16x12 | 80 | 54 | 56 | 41 |
| 13916-16-16 | 25 | 1 | -16 | 25,4 | 1 5/16x12 | 98 | 68 | 56 | 41 |

Série d'embouts compatible avec les tuyaux:

16 BCH1 BCH2